



The Agroforestry Show

6 - 7 September 2023 • Eastbrook Farm, Wiltshire

agroforestryshow.com

Show guide





Shade and shelter. Natural temperature control.

Shade and shelter are increasingly important for the health, welfare and productivity of your livestock. Agroforestry will help your land work harder for everyone – including vital wildlife species. Talk to us for bespoke one-to-one advice and up to 100% funded trees and protection.

Apply now at
[woodlandtrust.org.uk/plant](https://www.woodlandtrust.org.uk/plant)



WOODLAND
TRUST

Funded by
Sainsbury's

Proud to be the lead sponsor of the Agroforestry Show

The Woodland Trust is a charity registered in England and Wales (No. 294344) and in Scotland (No. SC038885). A non-profit-making company limited by guarantee. Registered in England No. 1982873. The Woodland Trust logo is a registered trademark. Picture: WTML CP01204 06/23



Helen Browning OBE, livestock and arable farmer, and CEO, Soil Association



Welcome to the UK's first Agroforestry Show

I have always loved trees and the many benefits they can have to a farming business and to the world. But as a tenant farmer, it had not been an option for me to explore agroforestry at Eastbrook. So when I inherited the 200 acres at Lower Farm a few years ago, I could finally indulge my enthusiasm, and make up for lost time!

Here at Eastbrook we want to create a farm that can handle whatever the future throws at us. We know that shade and shelter for our stock will be essential given the more extreme weather patterns we are already experiencing. We want animals outside as much as possible, and they seem happiest under trees. We also hope the trees will benefit our soil health, support more wildlife and give us new market opportunities. Our award-winning sea buckthorn gin is an early example of this, bringing income to both our farm and pub businesses.

I am keen for Eastbrook to be a place of learning and research. Sharing our mistakes will hopefully help others avoid them. Equally where we have seen success we are delighted if others can take some inspiration. Hosting this show is a great honour, but part of me wishes it were in another 10 years when our systems will be more mature. However, with so few mature agroforestry sites in the UK and so much enthusiasm from farmers, researchers and policymakers to increase uptake, we are very excited to be able to make this pioneering show happen.

It is wonderful the Soil Association is partnering with the Woodland Trust again, after our successful conference in 2017. Their financial support to so many farmers, including Eastbrook, to get agroforestry schemes planted has been key. It is great to see the scale and range of commercial sponsors and exhibitors. This shows that agroforestry is no longer a niche in farming but sits squarely at the heart of sustainable land management.

With thanks to our sponsors

Sainsbury's



Contents

- About the event organisers** 7
- How the Soil Association can help you bring agroforestry to life** 9
- How the Woodland Trust can help you to achieve your agroforestry goals** 11
- Ask the experts at our free agroforestry design clinic** 13
- Exhibitors** 14
- See agroforestry in action on a farm walk** 17
- Event map** 18
- Session timetables** 20
- Session details** 22
- Meet the speakers** 28
- The future of agroforestry** 32

The Soil Association and Woodland Trust have teamed up to bring you The Agroforestry Show – combining over 125 years’ experience and specialist knowledge across the agriculture and forestry sectors. The Soil Association has worked with farmers on the ground since 1946, continually advocating for practical and financial support for agroecological practices like agroforestry. The Woodland Trust is the UK’s largest woodland conservation charity, with expertise in planting, protecting and restoring trees and woodland across the UK. **Together we are a natural team for helping farmers make agroforestry on farms mainstream in the UK.**



Paul Burgess



Helen Cheshire



Alastair Horchicks



Ben Lee/WTML

Expert advice on how trees can support your farm business

Join us on our stand to hear practical ideas about integrating trees, woodland, and forestry into the farmed landscape to benefit your farming practice.

Discover how tree planting can support and improve:

-  productivity for crops and livestock
-  biodiversity
-  water quality
-  soil health
-  flood alleviation

We can also advise on the grants and support available for woodland creation so come along and meet us on our stand.



Find more guidance on agroforestry at: gov.uk/agroforestry-guidance



We're delighted to be sponsoring the first Agroforestry Show.



Woodland Trust



Helen Chesshire,
Lead Farming Advocate,
Woodland Trust

At the Woodland Trust, we strongly believe that bringing more trees into the heart of farmed landscapes will help tackle the growing and multiple pressures on land use in the UK. As farmers, you are all facing the challenges of severe weather events. Integrating trees will help your farm adapt, providing

much needed shade and shelter, enhanced water management and soil health and helping maintain food production. Agroforestry can help the forestry sector meet tree planting targets and its contribution to net zero without taking land out of food production. And of course, it can play an important role in nature recovery, providing much needed habitat in what can be a tough environment for nature.

We are delighted to have teamed up with the Soil Association to deliver the UK's first agroforestry show. It is time to bust the myths surrounding agroforestry; it is much more than rows of trees across fields and most if not all farms can implement it. Bushy hedges and shelter belts, clumps of in-field trees, parkland and woodland grazing as well as rows of fruit, nut or timber trees within your arable rotations are all part of the rich mix of agroforestry.

But although agroforestry is now frequently name checked by governments and the farming media and strengthening evidence of its benefits exists, it is estimated that as little as 3.3% of the UK's agricultural area is under agroforestry. Over the last decade, the Trust has run a pilot agroforestry scheme which has helped nearly 250 farmers across the UK integrate more trees into their farms. This experience shows us farmers are interested but need support to help make it happen.

We are very excited that by bringing together farmers, foresters, tree nurseries and equipment suppliers to see, discuss and share experiences, this show can be the catalyst for a mass agroforestry movement.

Soil Association



Ben Raskin,
Head of Horticulture and Agroforestry,
Soil Association

For many years organic and agroecological farming typically focused on rotations, crops and animal health but didn't specifically include trees and their holistic benefits to land management. The Soil Association has a long history of certificating forestry systems through FSC. But it was only 10 years ago that we put an increasing focus on the

benefits of trees within farming systems and started to help farmers integrate them into their land.

In 2017, we teamed up with the Woodland Trust and the Royal Forestry Society to organise the first ever farmer-facing agroforestry conference. This sold-out event attracted 250 people and brought together an emerging movement of thinkers and doers ready to take integrating trees to the next stage.

Then in 2019, the Soil Association produced the first agroforestry handbook alongside a range of authors and partners. This remains the most downloaded document we've ever produced, with copies going like hot cakes at agricultural events across the UK. The handbook can be downloaded at:

www.soilassociation.org/agroforestry

Alongside the Woodland Trust, we know that now is the time for a show. With increasing policy support from decision makers across the UK, an upsurge of interest from the farming community and a favourable funding landscape, agroforestry is having its time in the sun. And with agroforestry being one of the key tools that helps farms mitigate and adapt to climate change - while at the same time increasing profitability - we know this interest will only grow.

We hope this show is the first of many, and that all of you walk away with increased knowledge and confidence to take that next step, whatever stage of the journey you are on.



Tilhill

Professional guidance for farmers planting trees for any purpose

Our services include:

- Hedgerow planting
- Trees for woodland
- Shelterbelts • Fencing
- Agroforestry services

Give Simon Marrington a call on 07825 193278.

Email: simon.marrington@tilhill.com

www.tilhill.com

How the Soil Association can help you bring agroforestry to life

The Soil Association works with farmers and growers throughout the UK to enable a transition towards farming that's better for the climate, nature, and people.

Our advisors support farmers with technical and peer-to-peer knowledge exchange on the ground and we promote agroforestry to the wider community through campaigning and publicity work.

Together with our partners, we have ambitious plans to make agroforestry the norm in the UK. Our aim is to support farmers to adopt trees into their system in a way that not only delivers public goods for society but more importantly rewards them and their businesses, with profitable new markets and resilient farming systems.

Our approach:

1. Facilitating more organisations to build agroforestry into their strategy

We have a track record of helping organisations develop and facilitate strategic plans that best support farmers and landowners to successfully implement agroforestry.

2. Fostering more agroforestry farmer networks

We are currently running six agroforestry farmer networks, supporting regionally specific agroforestry. But there are plans to launch a lot more. Farmer networks act as a great catalyst for successful farmer-to-farmer knowledge exchange and are a great way to influence agroforestry uptake at landscape scale.

3. Supporting the better management of farm woodland

Almost all farms in the UK have some woodland already and lots of farmers are thinking about planting new ones. But many of these small woods are neglected and don't work effectively for the farm enterprise. We're providing one-to-one and national support to integrate trees in existing woodlands into agroforestry systems and provide advice for better and more holistic management of trees on farms.

4. Training the trainer

Building internal skills and knowledge is essential to support farmers in the long-term adoption of agroforestry. We are offering bespoke courses that cover all aspects of agroforestry including design, implementation, maintenance and harvesting of a system.

5. One-to-one and one-to-many support

We have developed an e-learning course which focuses on introducing farmers to agroforestry and farm woodland, looking at the different system types, their potential benefits (including the economic case) and how to begin with agroforestry system design.

In some cases we can also offer 1:1 support directly to farmers and land managers hoping to implement agroforestry. Available support includes farm visits, agroforestry system design sessions, market research, technical sessions or writing of proposals, cash flows and budgets.

Get in touch

If your farm or organisation needs help with any of the above, get in touch:

0117 314 5100

producer.support@soilassociation.org

GROWING RENEWABLE ENERGY FROM THE LAND

Why should you partner with us in combining SRC Willow & Poplar with your farm mix?

PLANTING:
BESPOKE AGROFORESTRY DESIGN AND PLANTING SERVICE - USING BLOCK AND STRIP PLANTING

GROWING:
LOW INPUT, LOW MAINTENANCE

HARVESTING:
WE PROVIDE ALL THE MACHINERY

END USES:
• OWN BIOMASS
• A VERSATILE MULCH
• BLEND INTO COMPOST MIXES
• ECO-BRIQUETTES
• MARKET VIA ECC



CONTACT US TODAY TO LEARN MORE:
07307 494848 / 07894 560071
WWW.ENERGYFROMCROPS.CO.UK

Oxbury
The Agricultural Bank

The **only UK bank** dedicated to British agriculture



Oxbury Flexi Credit



Oxbury Farm Loans



Oxbury Farm Credit



Oxbury Asset Finance



Oxbury Savings



Oxbury New Gen

Get in touch

SAM@oxbury.com or **01244 470252**

Terms and Conditions apply. See our website for details.

Oxbury Bank Plc is authorised by the Prudential Regulation Authority and regulated by the Financial Conduct Authority and Prudential Regulation Authority with Financial Services Register number 834822. Registered in England and Wales (Registered Number 11383418). Registered Office: One City Place, Queens Road, Chester, CH1 3BQ. VAT Registration Number GB 411 9831 06.

How the Woodland Trust can help you to achieve your agroforestry goals

We know pressure on land use is growing and that balancing demands is complex. With seventy percent of the UK's land area used for agriculture our research shows widespread adoption of agroforestry is needed to combine productive and resilient farming with nature recovery and net zero. Agroforestry has a clear role to play in helping farming adapt to climate change and ensure food security. Bringing more trees into farmed landscapes in well designed and managed agroforestry systems will make farms more resilient economically and environmentally.

We are delighted to be part of a growing movement that is raising the profile, understanding and implementation of agroforestry throughout the UK.

Our approach includes:

1. A network of outreach advisors providing one to one support

Over the last 15 years, we've created a network of advisors who are trained to provide bespoke, free advice to farmers and landowners on native woodland expansion, agroforestry, and managing ancient woodland and ancient and veteran trees. Providing on-site advice, they recommend a plan of action and help identify potential funding sources. We've been offering advice on agroforestry systems since 2013 and demand continues to grow.

2. Sharing research and advice

We've developed a suite of guidance for woodland creation, ancient and veteran trees and woodland restoration. We've published site assessment and tree species handbooks too, all available on our website. We're embedding these approaches through both our own and external training events.

3. Funding

We offer a range of funding support including our Trees for your Farm scheme, launched in 2013. This scheme provides expert in-person advice and support to farmers interested in piloting agroforestry. After submitting an agroforestry plan, we supply successful applicants with the trees and

protection (up to 100% of costs to create their scheme). In return, farmers plant, establish and manage their trees and provide feedback on their agroforestry. Currently funded by Sainsbury's, the project started small with six schemes in the 2013/14 season and has now helped to create nearly 250 agroforestry systems across the UK.

We also offer advice and heavily subsidised trees and protection for small areas of woodland, shelterbelts and hedgerows through our MOREwoods and MOREhedges schemes.

4. Advocating for policy and landowner change

Sharing the knowledge gained by working with farmers to create agroforestry schemes through our Trees for your Farm scheme is powerful. We work with farming partners to demonstrate the value of trees with farm visits for their peers, policymakers and parliamentarians, by speaking at farming conferences and by opening their farms at the annual agroforestry weekend.

5. Facilitating research

We're currently supporting four students completing PhD research programmes aiming to answer specific questions on agroforestry, including helping to disseminate their learnings to farmers and foresters. We also fund long-term monitoring of agroforestry schemes, collecting data on impacts on biodiversity, soil health, sward and tree growth.

6. Working in partnership

We work with a range of partners including the Soil Association, National Trust and Sainsbury's in advocating the role of agroforestry as part of a resilient and treed farming landscape.

Find out more about trees for landowners and farmers at: woodlandtrust.org.uk/plant
Send an enquiry to plant@woodlandtrust.org.uk or call us on **0330 333 5303**.

A pollinator-centric interactive database to help farmers find suitable agroforestry tree species with potential to survive climate change and be productive for farm diversification APP4FUTURE will provide information on future climate scenarios up to 2080 and show which tree species we should be planting now. *Right tree, right site, right climate*

Pollinator-centric agroforestry benefits:

- Honey, including high value medicinal honey
- Essential oils, phytochemicals
- Fruit, nuts, seed
- Coppice, wood by-products
- Shade, wind-protection for livestock

And benefits for the environment:

- Habitat for wildlife
- Carbon sequestration
- Rainwater holding capacity
- Top-soil stabilization



APP4FUTURE is now live: app4future.org.uk

Produced in partnership by Bee Happy Plants & Seeds, Forest Research, and the Soil Association, with funding from Innovate UK and Defra



Ask the experts at our free agroforestry design clinic

Get free bespoke advice from agroforestry specialists at the agroforestry design clinic.

In addition to the exciting programme of talks, a free drop-in design clinic is running throughout both days, giving you the opportunity to share your ideas and questions with advisors and specialists from Soil Association, Woodland Trust, Forestry Commission, Natural England and Abacus Agriculture.

Bring along a map of your farm or agroforestry designs to get expert insight and top tips to get your project up and running.

There will also be plenty of opportunity to connect with tree nurseries, equipment suppliers, researchers and funders to discuss your plans so that you walk away from the event ready to get started.

See our map on page 18 for the clinic's location.

Sign-up for a session on the board outside the design clinic tent.

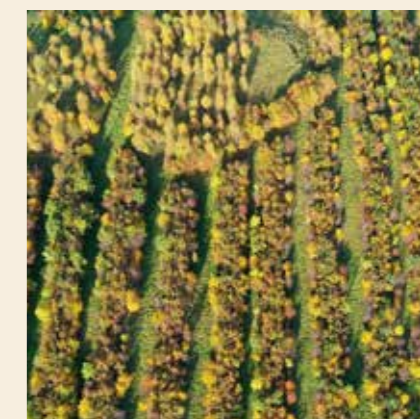


An example of a whole farm agroforestry plan

This plan includes browse silvopasture alley cropping, coppice to produce woodchip, two wood pasture areas for shade and shelter, walnut and willow living fence and full length shelterbelt.



Rory Francis/WTML



Patrick Barbour



Tim Scrivener



Patrick Barbour



Support for farmers to plant trees

England's Community Forests

England's Community Forests' Trees for Climate programme is the biggest single woodland creation project in England.

With years of experience and locally based support, our teams will help you plan, fund and deliver a woodland creation project that works for your land and business.

We fund projects of all sizes and, along with offering free advice and support, can fund up to 100% of tree planting costs. Plus, we can provide up to 15 years of maintenance payments.

To find out if your land is in a Community Forest area visit: englandscommunityforests.org.uk

Exhibitors

Visit 40 Agroforestry Show exhibitors to explore a wide range of products and services that can help make your agroforestry project a success. Meet the experts behind them for practical advice and funding guidance as well as the latest research and new technologies, from office tools to on the ground equipment. Whether you're well-versed in the benefits of trees on farms or new to the idea of agroforestry, our exhibitors have something for everyone.

Name	Website	Pitch
Agrovista	www.agrovista.co.uk	F
Alvan Blanch	www.alvanblanchgroup.com	16
Bee Happy Plants & Seeds	www.beehappyplants.co.uk	C
Biomass Connect	www.biomassconnect.org	3
Blundstone	www.blundstone.co.uk	4
CONFOR	www.confor.org.uk	H
Coventry University	www.coventry.ac.uk	5
Cranfield University	www.cranfield.ac.uk	1
DEFRA	woodlandcreation.campaign.gov.uk	A
Energy Crop Consultancy	www.energycropsconsultancy.com	D
England's Community Forests	www.englishcommunityforests.org.uk/	E
Exagen	www.exagen.co.uk	I
Farm Carbon Toolkit	www.farmcarbontoolkit.org.uk	K
Farm Woodland Forum	www.agroforestry.ac.uk	6
Forest Research	www.forestresearch.gov.uk	7
Forestry Commission	www.gov.uk/government/organisations/forestry-commission	A
Frank P Matthews	www.frankpmatthews.com	L
FWAG SW	www.fwagsw.org.uk	8
Garford Farm Machinery	www.garford.com	2
Green-Tech	www.green-tech.co.uk	9
Heron's Folly Garden	www.heronsfollYGarden.co.uk	10
Innovative Farmers	www.innovativefarmers.org	11
Lifeterra	www.lifeterra.eu	12
McVeigh Parker	www.mcveighparker.com	13

Name	Website	Pitch
New Gen Agri	www.newgenagri.com	21
Nofence	www.nofence.co.uk	J
ORC / Agricolgy	www.agricology.co.uk	15
Oxbury Bank	www.oxbury.com	G
Pasture for Life	www.pastureforlife.org	22
Penfolds Forestry	www.penfolds.org.uk	M
Plymouth City Council	www.englishcommunityforests.org.uk/plymouth-and-south-devon-community-forest	E
Rainbow Professional	www.rainbow.eu.com	N
Real Wild Estates	www.realwildestates.com	O
Regenerate Outcomes	www.regenerateoutcomes.co.uk	P
Royal Forestry Society	www.rfs.org.uk	Q
Sirane	www.sirane.com	17
Soil Association	www.soilassociation.org	SA
Soil Association Certification	www.soilassociation.org/certification	SA
Soil Association Exchange	www.soilassociationexchange.com	SA
The Grower	www.thegrower.co.uk	R
The Tree Shop	www.tree-shop.co.uk	18
Tilhill	www.tilhill.com	B
Tom the Apple Man	www.tomtheappleman.co.uk	S
University of Reading	www.reading.ac.uk	19
Vigilis Tree Shelters	www.vigilistreeselters.com	T
Wessex Woodland Management	www.wessexwoodland.com	U
Wood for the Trees	www.woodforthetrees.uk	23
Woodland Trust	www.woodlandtrust.org.uk	WT
Woodlands for Water	www.theriverstrust.org/our-work/our-projects/woodlands-for-water	20
Woodmizer	www.woodmizer.co.uk	14

Supporting farmers diversifying into forestry

Diversifying agricultural operations into woodland creation, agroforestry and management can unlock various opportunities that support commercial viability and environmental sustainability. Our specialist rural and agricultural legal advisers can help farmers navigate potential hurdles.

If purchasing an established woodland, our team can carry out all the necessary legal due diligence to guide you through this process, including establishing the absence of countryside stewardship schemes, woodland grant schemes and carbon registration; identifying any tree preservation orders; and reporting on any commercial agreements associated with the woodland and working with your advisers to ensure these are favourable.

While carbon credit registration requires the planting of new trees rather than utilising existing ones, woodland grant schemes are available for the management of existing

woodlands – providing additional opportunities for commercial viability.

Alternatively, you can choose to buy land or utilise what you already own to create woodland or carry out agroforestry, allowing you to register for carbon credits and woodland creation grant funding. Where you occupy as a tenant farmer, our legal support extends to advising both farm business tenants and Agricultural Holdings Act tenants on how they may diversify, while complying with the terms of their tenancy agreement.

Our experienced agricultural team understands the potential impact on inheritance tax and succession planning considerations when diversifying. As woodlands become more dominant and not merely ancillary to farming operations, the eligibility for agricultural property relief may change, necessitating careful consideration.

Financing woodland projects can be costly. To assist landowners, we work

closely with the banks lending in this sphere and carry out the security work for those banks – ensuring farmers have the necessary resources to embark on their woodland diversification journey.

By seeking legal advice, farmers can navigate potential pitfalls, protect their interests, and seize the opportunities presented by woodland diversification.

For further information, please visit www.shma.co.uk or contact:

Amy Cowdell
Agriculture Partner
07976 413993
amy.cowdell@shma.co.uk

Jennie Wheildon
Agriculture Partner
01789 416 527
jennie.wheildon@shma.co.uk

Alex Wensor
Agriculture Associate
07929 845354
alex.wensor@shma.co.uk

See agroforestry in action on a farm walk



1. Roundel and tree guard display
Guided walk meeting point
2. Newly planted grazed woodland
3. Wood chip experiment
4. Cows in silvoarable alleys
5. Shelterbelt
6. Riparian woodland
7. Willow/poplar browse block
8. Newly planted hedge
9. Woodland pigs
10. Extensive orchard alley cropping
11. Compost demo
- Event field

The Eastbrook Farm team has developed several agroforestry schemes since 2016 which will be showcased at the event, including:

- silvoarable and silvopasture alley cropping
- shelterbelts and hedgerows
- browsing blocks
- extensive fruit orchard
- newly planted wood pasture 'roundels'
- woodland pigs.

Explore on your own or join one of the guided walks with farm owner Helen Browning, agroforester Ben Raskin, and Soil Association agroforestry advisor Jon Haines.

The circular walk will take approximately 1.5hrs to complete. The route includes gradients and uneven ground. Please keep to the route and follow all safety and route signs. The exact route might be subject to change on the day.

THE BEST TIME FOR AGROFORESTRY WAS 20 YEARS AGO...

THE SECOND BEST TIME IS NOW.

The Agroforestry Show is a celebration of the UK's rich history of trees on farms. From our vast networks of hedgerows, to veteran trees and ancient wood pastures, it's clear that most farmers in the UK are already agroforesters!

Agroforestry offers a toolbox of practices to suit different farming and forestry contexts. Recent years have seen more people inspired by novel forms of agroforestry such as alley cropping, with designs adapted to fit the contemporary realities of mechanised agriculture.

At the same time farmers, foresters, growers, and graziers are realising the benefits of traditional practices such as woodland grazing or planting shelterbelts for crop and animal protection. With the development of carbon and biodiversity markets such systems are likely to grow in popularity as their true value is appreciated.

Agroforestry also offers opportunity for collaboration between farmers and foresters. Through working together and sharing complementary skills, knowledge and networks, farmers and foresters have the power to regenerate British landscapes to produce sustainable food, fuel and fiber while protecting the environment for generations to come.

The Agroforestry Show reflects the diversity of people and organisations involved in the UK's agroforestry movement with the curated sessions highlighting some of the UK's leading practitioners and researchers in this field.

My hope is that this movement continues to grow, inspiring more people to appreciate the important role trees play in enhancing the productivity and resilience of our farmed landscapes.

EDD COLBERT
www.agroforestrydesign.co.uk

Agroforestry Consultant and
Event Manager of The Agroforestry Show



Event map



- Car park
- Toilets
- Food and drink
- First aid
- Information and lost property
- Campsite
- Meeting point and farm walk start

While at the event we ask that you kindly follow the principles of the Countryside Code.

- Please use bins provided - we are aiming to leave no trace.
- The event site has uneven ground in places due to the nature of the outdoor location.
- Please stay on dedicated walkways where present.
- Please extinguish any cigarettes properly and do not smoke in any marquees or gazebos.
- Use of drones is not permitted anywhere on the site.
- Please respect our neighbours when leaving the site.

Day 1 at a glance

Time	Sainsbury's Tent	Forestry Commission Tent	Tilhill Tent	Farmers Weekly Tent	Farm walks and demos
09:15	Welcome from Helen Browning OBE	-	-	-	-
09:45	Profitable silvopasture with Matt Chatfield	British fruit growing through agroforestry	What can the forestry sector bring to agroforestry?	Cows and trees	Farm walk with Ben Raskin
11:15	-	-	-	-	Woodmizer sawmill demo
11:45	UK government support for agroforestry	Biomass agroforestry	The case for farm-scale forestry	Sheep silvopasture: seeing the wool from the trees	Fruit tree pruning demo
13:15	-	-	-	-	-
14:15	Does it all stack up? How to fund an agroforestry scheme	Reinforcing rivers: the importance of water for landowners	High value timber agroforestry	Farmer-led agroforestry design	Farm walk with Helen Browning, OBE
15:30	-	-	-	-	Woodmizer sawmill demo
16:00	Making agroforestry work for tenants	Valuing natural capital in agroforestry	Wood pasture and wood meadows	Trees for air quality and farm business	Dung beetle safari with Sally-Ann Spence
17:30	-	-	-	-	-
18:30	After party				
22:45	Site closes				



Make sure to stick around in the evening for an exclusive DJ set from Andy Cato (Groove Armada) plus live music from local bands and food and drink from The Royal Oak.

Day 2 at a glance

Time	Sainsbury's Tent	Forestry Commission Tent	Tilhill Tent	Farmers Weekly Tent	Farm walks and demos
09:00	Successful agroforestry brands	Hedges, edges and farmland trees	Trees, climate change and resilience	Functional biodiversity in agroforestry	Farm walk with Ben Raskin & John Davies
10:30	-	-	-	-	Woodmizer sawmill demo
11:00	The importance of trees in resilient livestock systems	The role of tree nurseries in UK agroforestry	What next for carbon finance for agroforestry implementation?	The benefits of silvohorticulture for UK veg growers	Farm walk with Jon Haines
12:15	-	-	-	-	-
13:15	Digital tools for agroforestry	Tree health tactics	Sharing land, skills and experience in on-farm collaboration	The role of agroforestry in regen ag	Pigs, trees, farming and forestry
14:30	-	-	-	-	Woodmizer sawmill demo
15:00	Future nut production in the UK	Co-creating the future of UK agroforestry - next steps	The great research round-up	Improving crop and soil health with trees	Hedge safari (farm walk)
16:30 - 17:00	Closing session with Dr. Darren Moorcroft, Woodland Trust CEO	-	-	-	-

Scan here to find out more about the show timetable.



Session details - Day one

Session name	Description	Time	Location
Welcome session	Welcome from Helen Browning OBE.	9:15	Sainsbury's
Profitable silvopasture with Matt Chatfield	Make the most of your woodlands. Come and hear how to increase farm business resilience through rotational grazing under the trees. Matt Chatfield will provide practical details and interlink livestock health, meat marketing and biodiversity. As Matt says, if I can do it, anyone can. You will be taken on a journey from the inspiration to the creation of 'cull yaw' which is sold to high-end London chefs.	9:45	Sainsbury's
British fruit growing through agroforestry	What opportunities exist for producing more UK grown fruit through agroforestry? Which fruit trees work best in these systems, and what challenges might integrating fruit trees into a farming enterprise present? In this session chaired by Natural England's Agroforestry Specialist, Geoff Newman, you'll find answers to these questions and hear how three pioneering agroforesters are growing fruit at different scales.	9:45	Forestry Commission
What can the forestry sector bring to agroforestry	Tilhill speakers cover what forestry can bring to agroforestry i.e. establishment, design, protection, resilience, pests, disease and funding, the benefits of UK nurseries, increasing demand and capacity for tree supply, and finally CarbonStore covering carbon opportunities for woodland, hedgerows and agroforestry.	9:45	Tilhill
Cows and trees: why a group of farmers has planted silvopasture in Devon	Three farmer members of the innovative farmers trial, Devon Silvopasture Network discuss their initial appeal and any early observed benefits and negatives of implementing silvopasture on their farms. The farmers will also discuss planting designs and any handy tips and tricks they discovered along the way.	9:45	Farmers Weekly
Farm walk with Ben Raskin	Meet at the guided walk meeting point near the roundel and tree guard display.	9:45	Meeting point
Woodmizer sawmill demo	Woodmizer will be demonstrating their LT40 Wide sawmill at The Agroforestry Show on both days. Join this session to learn more about this powerful mobile sawmill and the possibilities of on-farm timber processing.	11:15	Demo zone
UK Government support for agroforestry	Hear representatives from the UK Government and devolved administrations outline what current support is available for tree planting and agroforestry on farms. Listen to each Government's aspirations and outline proposals for future support. Voice your thoughts on what support you think the sector needs if agroforestry and farm woodlands are to become widespread across the UK.	11:45	Sainsbury's

Session details - Day one

Session name	Description	Time	Location
Biomass agroforestry	What role can biomass production play in agroforestry systems? What species are suitable for growing alongside crops and pasture, and what markets are available for these products? Furthermore, what role can biomass play in reducing on-farm costs? In this session you'll hear answers to these questions from leading researchers and practitioners in the field of agroforestry biomass.	11:45	Forestry Commission
The case for farm-scale forestry	The increased interest in integrating trees into farming systems as agroforestry has helped to highlight the longstanding challenges around managing existing farm woodlands. This session will explore the case for farm-scale forestry, where products and services from on-farm woodland are managed as another farm enterprise.	11:45	Tilhill
Sheep silvopasture: seeing the wool from the trees	Agricultural support is shifting away from direct payments to a public money for public goods approach with the environment on par with food production. There is a growing interest in the value of integrating trees into the farmed landscape. Agroforestry has the potential to improve soil health and biodiversity, and sequester carbon, while maintaining profitable food production and achieving resilience through diverse income streams. Could trees and sheep be a solution?	11:45	Farmers Weekly
Fruit tree pruning demo	Join Tom the Apple Man in this practical demonstration of summer fruit tree pruning in the Eastbrook Farm Orchard.	11:45	Meeting point
Does it all stack up? How to fund an agroforestry scheme	This session will explore a variety of models for funding agroforestry on farms of all types, with insights from the UK, Europe and South America.	14:15	Sainsbury's
Reinforcing rivers: the importance of water for landowners	Discover how we manage our land from the farm to the catchment scale. Hear from experts, policymakers and landowners with opportunities to make a direct impact on our UK watercourses through creating diverse riparian buffers which lead to multiple benefits for the farm.	14:15	Forestry Commission
High value timber agroforestry	Join Jez Ralph and Caroline Ayre of Evolving Forests to hear about the feasibility and practicalities of producing high value timber in low-density agroforestry systems. They'll also share what can be learned from urban forestry in terms of growing and using timber from open grown trees, as well as considering species suitability and silviculture based on different end-uses.	14:15	Tilhill
Farmer-led agroforestry design	In this session chaired by agroforestry advisor Emma Eberhardt, you'll hear from two farmers who developed their own distinct agroforestry plans to meet their farming objective. You can also ask questions and learn what key factors farmers and advisors must consider when planning to establish and manage trees on farms	14:15	Farmers Weekly

Session details - Day one

Session name	Description	Time	Location
Farm walk with Helen Browning	Meet at the guided walk meeting point near the roundel and tree guard display.	14:15	Meeting point
Woodmizer sawmill demo	Another chance to see the demo detailed at 11:15am.	15:30	Demo zone
Making agroforestry work for tenants	Planting trees on tenanted land presents unique challenges for agroforestry. For example, who owns the trees on farms, and what happens to these assets when a tenancy runs out? Find out how landowners and tenant farmers can work to overcome these challenges in this session with Stephen Briggs, a tenant agroforester, George Dunn of the Tenant Farmers Association and Jeremy Moody of Central Association of Agricultural Valuers.	16:00	Sainsbury's
Valuing natural capital in agroforestry	New markets are emerging for farmers and foresters to sell credits facilitated by land management practices. However, understanding how these credits function and knowing how to identify trustworthy partners can present challenges. In this session, hear about methods for creating baselines and monitoring carbon stocks, how working at a landscape level can enhance carbon capture and biodiversity increase, and how to access trustworthy markets while avoiding greenwashing.	16:00	Forestry Commission
Wood pasture and wood meadows	This session will introduce you to wonderful wood pastures and wood meadows. The mosaic structure of trees integrated into grassland is a winning formula that can be productive as well as ecologically and culturally valued. Expert practitioners will discuss the benefits as well as the challenges of these systems.	16:00	Tilhill
Trees for air quality and farm business	The workshop will look at how trees on farms can mitigate ammonia emissions from agriculture, the wider benefits for air quality, farm business, biodiversity, and carbon capture, and support available. Findings from the Ammonia Reduction from Trees (ART) project will be presented and David Brass from the Lakes Free Range Eggs Company will share his experiences of planting woodland ranges for hens.	16:00	Farmers Weekly
Dung beetle safari with Sally-Ann Spence	Join Sally-Ann Spence, renowned scientist, presenter, farmer, and entomologist on a dung beetle safari of Eastbrook Farm's silvopasture alley cropping field to understand the value of pastureland biodiversity for soil, pasture and livestock health.	16:00	Meeting point

Session details - Day two

Session name	Description	Time	Location
Successful agroforestry brands	How can agroforestry be used to develop novel food products and brands? What role could 'tree-based' products play in developing markets for perennial products. In this session you'll hear from several successful agroforestry brands about how to use agroforestry to develop new marketing narratives.	9:00	Sainsbury's
Hedges, edges and farmland trees	This session will bring alive the benefits of existing hedges, edges and farmland trees. Hear from farmers who value them and the wide variety of roles they play on their farms. Find out about the practical management of farm native woodlands, hedges, shelterbelts and in-field trees to support livestock, crops, nature and future generations.	9:00	Forestry Commission
Trees, climate change and resilience	Agroforestry has potential to help farms adapt to climate change. This session will consider different ways that trees in agroforestry systems provide greater adaptation benefits in the face of temperature/rainfall trends, more erratic weather and extreme climatic events. Agroforestry also needs to be designed to withstand climate change impacts. We will discuss different aspects that need to be considered in resilient agroforestry design.	9:00	Tilhill
Functional biodiversity in agroforestry	Around 6,000 species of insect are involved in pollinating crops and plants in the UK. Introducing small changes to our farming system can encourage beneficial wildlife, such as wild pollinators and natural predators, important for agricultural sustainability. Hear from a researcher on how diversified farming practices like agroforestry can help beneficial wildlife, a farmer about his approach and its impact, and advisors providing solutions on small things you can add to your farm.	9:00	Farmers Weekly
Farm walk with Ben Raskin and John Davies	Meet at the guided walk meeting point near the roundel and tree guard display.	9:00	Meeting point
Woodmizer sawmill demo	Woodmizer will be demonstrating their LT40 Wide sawmill at The Agroforestry Show on both days. Join this session to learn more about this powerful mobile sawmill and the possibilities of on-farm timber processing.	10.30	Demo zone
The importance of trees in resilient livestock systems	The presence of trees in livestock systems can act as an important buffer leading to an increase in system resilience. There is considerable potential for trees to support good welfare for farmed animals, including protection against extreme weather patterns and optimising the use and value of home-grown feedstuffs. In this session, the panellists will cover the major benefits of re-connecting animals with tree-enriched landscapes, covering aspects of shade and shelter and nutrition and medicine.	11:00	Sainsbury's

Session details - Day two

Session name	Description	Time	Location
The role of tree nurseries in UK agroforestry	A discussion on how the UK nursery sector can work together to produce agroforestry trees with a focus on fruits, nuts and other species to upscale agroforestry across the UK. Highlighting benefits of knowledge sharing, partnership working and challenges around skills, labour and tree health. Speakers include Steph from FP Matthews, Tom the Appleman and Charlie from TreeSource.	11:00	Forestry Commission
What next for carbon finance for agroforestry implementation?	The Soil Association, Woodland Trust, Organic Research Centre, Finance Earth, SRUC and Scottish Forestry have been supported by NEIRF funding to investigate the feasibility for carbon finance to help support the implementation of new agroforestry projects in the UK. Join this session to hear about the conclusions from the project and the recommendations for next steps.	11:00	Tilhill
The benefits of silvohorticulture for UK veg growers	A talk from silvohorticulturists Andy Dibben, head grower at Abbey Home Farm and Marina O'Connell, director of The Apricot Centre. Andy will share how he approached incorporating trees into his organic veg system and explains the benefits he's seen so far. Marina O'Connell will be sharing lessons learned from agroforestry work in Devon.	11:00	Farmers Weekly
Farm walk with Jon Hanies	Meet at the guided walk meeting point near the roundel and tree guard display.	11:00	Meeting point
Digital tools for agroforestry	Forest Research, Cranfield University and Verna Earth highlight the research and tools for agroforestry practitioners to use: the Forest Research Ecological Site Classification (ESC) for species suitability and yield estimation; Cranfield's Agroforestry Tools YIELDSafe and FARMSafe; and Verna Earth's ForestFounder spatial software platform.	13:15	Sainsbury's
Tree health tactics	Improve your practical awareness of tree health and how to manage tree pests and diseases in a safe and time efficient way. The activities will take attendees through the process of identifying potential tree problems, risk mapping and task prioritisation while also exploring the importance of trees on farm and why it all matters.	13:15	Forestry Commission
Sharing land, skills and experience in on-farm collaboration	This session will look at how some of the biggest barriers to agroforestry uptake can be overcome by collaborating. We'll explore the benefits of sharing land, expertise and skills as well as setting out some of the best practices for effective cooperation. We'll speak with a practitioner and a land lawyer about their experiences of setting up and running effective shared enterprises and consider how to avoid pitfalls along the way.	13:15	Tilhill

Session details - Day two

Session name	Description	Time	Location
The role of agroforestry in regenerative agriculture	Hear from Understanding Ag consultant Kyle Richardville and Essex farmer George Young about how trees can form a coherent part of a farm's regenerative transition, and how to design agroforestry implementation to optimise the productivity, environmental and financial benefits of the farm business. Regenerate Outcomes' Dr Matt Jordon will then unpack how farms can earn additional revenue by generating carbon credits from agroforestry plantings.	13:15	Farmers Weekly
Pigs, trees, farming and forestry	In this session we'll dive into the effects of pigs on trees and herbage, the effects of trees on pigs (and herbage) and how the three can be combined to create one of the more complex, exciting and productive agroecological systems!	13:15	Meeting point
Woodmizer saw mill demo	Another chance to see the demo detailed at 10:30am.	14:30	Demo zone
Future nut production in the UK	If you're considering agroforestry but aren't sure what to plant, or perhaps you already have some nut trees but don't know what to do with them, this session is for you. The panel will cover nut variety selection, tree spacing, protection, management, pruning, yields, harvesting, processing and products.	15:00	Sainsbury's
Co-creating the future of UK agroforestry: next steps	Presentation to describe findings from work at Coventry Uni, as well as referring to key points from the Agroforestry Show. Ongoing work with Climate Farms Demo Network will also be presented, with opportunities for input and co-design. We will then hold a participatory discussion with the audience to prioritise and co-design future research.	15:00	Forestry Commission
The great research round-up	The session is a summary of research from scientists at the cutting edge of agroforestry science. Speakers will include Rafael Pompa, Sally Westaway, Erika Degani and Amelia Hood.	15:00	Tilhill
Improving crop and soil health with trees	Can we reduce our dependence on inputs such as fertiliser and pesticides by utilising trees and their products, and reduce greenhouse gas emissions? Hear from Clo Ward, The Perennial Green Manures Project, about the potential of combining trees into the landscape as a nitrogen source, and Joey Hughes, Merched Y Berllan, sharing insights from their use of high-salicylic acid willow chippings to improve the yield and health of pear orchards.	15:00	Farmers Weekly
Hedge safari	Join a walk to view hedgerows at the site. We will look at soil health beneath hedgerows compared to that in adjacent fields to discuss the climate change mitigation and flood alleviation role that hedges can provide, as well as discussing how to implement a management cycle that works for you.	15:00	Meeting point
Closing session	Closing session with Darren Moorcroft, Woodland Trust CEO.	16:30	Sainsbury's

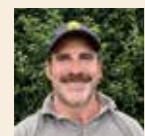
Meet the speakers



Tom Adams
Organic fruit tree grower,
Tom the Apple Man,
Oswestry



Dr Bianca Ambrose-Oji
Principal Social Scientist,
Forest Research



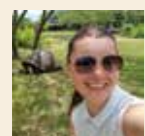
Ben Andrews
4th generation mixed
farmer, Herefordshire



Henry Andrews
Beef farmer,
Leworthy Manor Farm



Paul Arkle
Environment Advisor,
Cumbria Farm
Environment Partnership



Sophie Arnold
Assistant Farm Manager,
Hope Farm (RSPB),
Cambridgeshire



David Ashford
Senior Engagement Manager,
Land Management Reform
Division, Welsh Government



Peter Aspin
Silvopasture farmer,
Shropshire Agroforestry
Project



Caroline Ayre
MICFor
Executive Director,
Evolving Forests



Stephen Bathgate
Software Developer,
Forest Research



Dr. Bill Bealey
Ecologist, UK Centre for
Ecology and Hydrology



Michael Bentley
Fruit grower, Castle Fruit
Farm, Gloucestershire



Emma Bird
Agroforestry Project
Manager, Woodland Trust



Hugh Blogg
Horticultural Advisor,
Soil Association



Liz Bowles
Chief Executive,
Farm Carbon Toolkit



David Brass
Poultry farmer, CEO,
Lakes Free Range Eggs



Stephen Briggs
Silvoarable farmer,
Cambridgeshire



Dr. Matthew Brown
Co-CEO, Verna Earth



David Brown
Forester, Broadleaf Wales



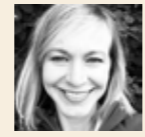
Helen Browning
OBE
CEO, Soil Association



Sarah Brownlie
Project Manager,
Wilder Carbon



Professor Paul Burgess
Professor of Sustainable
Agriculture and Agroforestry,
Cranfield University



Claire Byers
Tree Source



Tom Cannon
Nut grower,
Roughway Farm, Kent



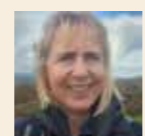
Dan Carne
Director, UK
Woodmeadow Network



Helen Carrol
Shropshire sheep farmer



David Carruth
Agroforester, The Woolly
Pig Company, Ayrshire



Professor Pippa Chapman
Chair in Biogeochemistry,
University of Leeds



Matt Chatfield
Farmer,
The Cornwall Project



Helen Chesshire
Lead Farming Advocate,
Woodland Trust



Tim Coates
Farmer and Co-Founder,
Oxbury Bank



Simeon Day
Advisor,
FWAG South West



Jon Dearsley
Joint Head of Natural
Capital, Savills



Erika Degani
PhD student,
Reading University



Andy Dibben
Head Grower,
Abbey Home Farm,
Cirencester



George Dunn
Chief Executive, Tenant
Farmers Association



Steph Dunn-James
Director, Frank P Matthews



Emma Eberhardt
Agroforestry Advisor,
Forest for Cornwall



Bryan Elliot
Eucalyptus Renewables Ltd.



Hannah Fraser
Silvoarable farmer,
Fraser Flowers



Ben Gallant
River Operations Team
Manager, Westcountry
Rivers Trust



Jeremy Gibbs
Founder, Forces Farming
Ltd.



Emma Gilmartin
Conservation Advisor,
Woodland Trust



Ben Goh
Commercial Manager,
Maelor Forest Nurseries



Hilary Grant
Agriculture and Climate
Change Senior Policy Advisor,
Scottish Government



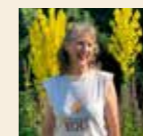
Andy Gray
Farmer, Chairman of
M C Kelly Ltd,
Chairman of Devon County
Agricultural Association



Ross Guyton
Woodland Division
Manager, Oakbank Ltd.



Ashley Hardaker
Forestry Lecturer,
Bangor University



Sarah Holdsworth
Managing Director,
Bee Happy Plants



Stuart Holm
Outreach Manager,
Woodland Trust



Kate Hughes
Journalist and
regenerative farmer



Joey Hughes
Founder, Orchard Daughters
- Merched Y Berllan



Amanda Illing
Agroforester,
Wakelyns, Suffolk



Dr Hannah Jones
Soil and Carbon Advisor,
Farm Carbon Toolkit



Chris Jones
Livestock farmer, Wood
Valley Farm, Cornwall



Chris Johnston
Project Leader in
Environment & Renewable
Energy Research, Agri-Food
and Biosciences Institute



Dr. Matthew Jordon
Chief Scientific Officer,
Regenerate Outcomes



Josiah Judson
Researcher,
University of Leeds



Berglind Karlsdottir
Social Scientist,
Forest Research



Tom Kemp
Director and Head Forester,
Working Woodlands
Cornwall



Nigel Kendall
Lecturer in Nutrition, School
of Veterinary Medicine
and Science, University of
Nottingham



Phil Knott
Crofter and Director of
Reforesting Scotland



Martin Lines
Arable farmer,
Cambridgeshire and CEO
of Nature Friendly Farming
Network



Sarah Langford
Author and Farmer



Jake Locke
Founder, Silvasheep



Professor Martin Lukac
Professor,
Reading University



Dr. Rory Lunny
Senior Policy Advisor,
DEFRA Agroforestry Policy
Team



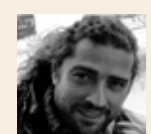
Dr. Philippa Mansfield
Catchment Sensitive
Farming Senior Agricultural
Advisor, Natural England



Eleanor Marks
Technical Officer, LEAF



Simon Marrington
Business Development
Manager, Tilhill



Charlie Marsden-Noton
Co-founder, Tree Source



David McCulloch
Head of Carbonstore



Jeremy Moody
Secretary and Advisor,
The Central Association of
Agricultural Valuers



Dr Darren Moorcroft
CEO, Woodland Trust



Geoffrey Newman
Agroforestry and
Traditional Orchard Senior
Specialist, Natural England



Professor Steve Newman
Consultant, Abacus
Agriculture



Marina O'Connell
Director,
The Apricot Centre



Jim O'Neil
Agroforestry Development
Manager, Forestry
Commission



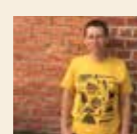
Seren Patterson
Water Stewardship
Manager, Rivers Trust



Dr. Mike Perks
Principal Scientist,
Forest Research



Rafael Pompa
PhD student,
Reading University



Ruth Pybus
Forester, Broadleaf Wales



Jeremy Ralph
Director, Evolving Forests



Liza Randall
Land and Property
Surveyor, Woodland Trust



Ben Raskin
Head of Horticulture
and Agroforestry, Soil
Association



Carolyn Richards
Silvopasture beef farmer,
Ashridge Court Farm, Devon



Nathan Richards
Stone fruit grower &
agroforester, Troed y Rhiw
Organics, Wales



Kyle Richardville
Consultant,
Understanding Ag



James Robinson
5th generation
organic dairy farmer,
South Cumbria



Oli Rodker
Co-Founder,
Landworker's Alliance



Rosy Scholes
PhD candidate Ecology
and Agri-Environmental,
University of Reading



Will Simonson
Principal Research in
Agroforestry, Organic
Research Centre



Guy Singh Watson
Executive Chairman,
Riverford Organic Farmers
Ltd



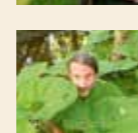
Jeremy Smith
Chartered Surveyor and
Land Agent, Dixon Smith



Jo Smith
Senior Researcher,
MV Agroecology
Research Centre



Dan Smith
Farm Manager,
Jamie's Farm



Dr. Adrian Southern
Head of Landscape
Scale Conservation,
Woodland Trust



Sally-Ann Spence
FLS FRES
Entomologist, farmer, and
owner of Berrycroft Hub



Ben Stafford
CEO, Regenerate Asset
Management



Tom Staton
Postdoctoral Research
Associate in Agroforestry
Systems, Reading
University



Sokratis Stergiadis
Professor in Animal
Science, University of
Reading



Phil Stocker
Chief Executive, National
Sheep Association



Rebecca Swinn
Innovative Farmers Manager,
Soil Association



Tom Tame
Walnut and cobnut grower,
Warwickshire



Charles Tebbut
Owner, Food & Forest



Clive Thomas
Senior Advisor, Regenerative
Forestry, Soil Association



Colin Tosh
Senior Agroforestry
Researcher, Organic
Research Centre



John Tucker
Senior Relationship
Development Manager
Ambassador, Woodland
Trust



Ian Turner
Head of Major Planting
and Ecology Projects, Tree
Council



Daan Van der Wekken
Head of Sustainability, The
British Standards Institute



Elena Vangelova
Senior Biogeochemist,
Forest Research



Rosemary Venn
Researcher, Centre of
Agroecology, Water and
Resilience



Eric Walters
Farmer, Good Small Farms,
Stroud



Clo Ward
Researcher, Perennial
Green Manures, Ecodyfi



Nicola Warden
Agricultural Technologist,
College of Agriculture,
Food and Rural Enterprise



Sally Westaway
PhD student, Royal
Agricultural University



Dr. Lindsay Whistance
Senior Livestock Researcher,
Organic Research Centre



Lyn White
Forestry and Farming
Development Officer,
Scottish Forestry



Peter Wilderspin
Rural Surveyor, Cambridge
University Farm



Dr Katy Wiltshire
Research Fellow,
Cranfield University



David Wolfe
Agroforester,
Wakelyns, Suffolk



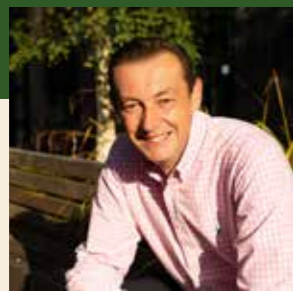
Dan Wynn
Head of Nature Based
Solutions, Kent Wildlife Trust



George Young
Farmer, Fobbing Farm,
Essex

Scan here to
read more
about our
speakers.





Dr. Darren Moorcroft
CEO, Woodland Trust



The future of agroforestry

One of the first events I attended when I joined the Woodland Trust was the sell-out agroforestry conference in 2017. This event awakened UK farmers, foresters and policy makers to the potential of agroforestry. There is a growing appreciation that trees integrated into farmland have the power to improve biodiversity and soil health, capture carbon emissions and support the production of healthy nutritious food and sustainable timber in the face of a changing climate. But how can we help turn this interest into action and ensure agroforestry becomes a mainstream land use?

One of our solutions was to join forces with the Soil Association again and organise a two-day agroforestry festival. As you join us at the UK's first Agroforestry Show, I hope you agree we have achieved our aim in bringing together an exciting and inspiring programme - enabling farmers and foresters to share their expertise and experiences and make connections so agroforestry becomes a reality across farmland throughout the UK. This packed programme of inspiring talks, farmer and forester led discussions, field walks, exhibitions and market stalls is just the beginning. Our vision is that whether you are a farmer or a forester, a policy maker or advisor, a tree nursery or equipment supplier, you leave this show inspired and equipped with the tools, knowledge and confidence to play your role in the agroforestry movement.

This show wouldn't have been possible without the support of our sponsors and exhibitors, which reflect key players across the farming and forestry sectors, and the speakers who are delivering over 30 sessions as well as guided walks and demonstrations. A special thank you to Helen Browning and her staff at Eastbrook Farm as well as the Royal Oak who are kindly hosting us. But of course, none of this would be possible without your support. It is you who will leave this show and help ensure the agroforestry movement continues to go from strength to strength.

Remember: the Woodland Trust and the Soil Association are here to support you in every step of your agroforestry journey. Through collaboration and by sharing experiences and solving challenges, we can help make sure that agroforestry becomes a staple of each farming and forestry system. With your help, together we can help create a resilient and healthy countryside for the people and nature that depend on it.



Welcome to Transition

- a *Farmers Weekly* initiative to secure a more sustainable future for your farm business

SPECIAL AGROFORESTRY SHOW OFFER

SAVE 20%

on a 12-month subscription to *Farmers Weekly* using code **AF20**

As well as producing food, forward-thinking farmers today are refocusing their goals to ensure they thrive as businesses while looking after the environment.

This means improving soil health, air and water quality, nurturing biodiversity and often storing carbon to help mitigate climate change.

We are pleased to be part of this year's Agroforestry Show - sharing our knowledge and highlighting ways we can make this Transition together.

Working side-by-side, our goal is the same as yours: a sustainable future for British agriculture and for your farm business.



SCAN THE CODE



Simply go to www.FWi.co.uk/AF20 or call 0330 333 9694 and quote code **AF20**

Notes



We work with all farmers for a more sustainable future.

Whether you're just starting to make changes on your farm or are already knee-deep in nature-based practices, we can help.



Get in touch!

www.soilassociation.org/farmers-growers

producer.support@soilassociation.org

0117 314 5100





The Soil Association is registered with the Charity commission for England and Wales, charity number 206862 and with the Office of the Scottish Charity Regulator, charity number SCO39168.

The Woodland Trust is a charity registered in England and Wales (No. 294344) and in Scotland (No. SC038885). A non-profit-making company limited by guarantee. Registered in England No. 1982873. Cover image: WTML CP00734